

TOLERANCE UNLESS OTHERWISE SPECIFIED
 $\pm 0.1/2^\circ$ DIAMETERS \pm

ROUGHNESS - 32 CLA
 DIAMETERS TO BE CONCENTRIC WITHIN-
 HOLD NORMAL AND PARALLEL FACES WITHIN-

REMOVE ALL BURRS AND BREAK ALL SHARP EDGES
 DIMENSIONS ARE BEFORE PLATING OR FINISH

DRAWN IN ACCORDANCE WITH BS. 308.
 THIRD ANGLE PROJECTION. DO NOT SCALE.
 DIMENSIONS ARE IN MILLIMETRES.

DRAWING No.
 76-9450/439088X

ISS.
 E

ENVIRONMENTAL:-

TEMPERATURE RANGE:- -40 +135°C

INGRESS PROTECTION:- IP 67

SHOCK:- 50 G

IMPACT:- 20 JOULES

DESIGNED IN ACORDANCE WITH
 BRITISH COAL (N.C.B) NON-SPARK
 METALS SPECIFICATION 481/1965.

MECHANICAL:-

DIMENSIONS:-

THREAD DIAMETER (NOM) 22

BODY ACROSS FLATS (NOM) 20

PANEL THICKNESS (MAX) 6

PITCHING (MIN) 35.2

INSTALATION TORQUE 2.5 Nm

CONSTRUCTION:-

"ALL METAL" EXTERNAL PARTS
 "STRIPABLE" SWITCHING ELEMENT
 CAN BE REPLACED.

FINISH:-

BODY:- BLACK P.T.F.E.

BUTTON:- X P.T.F.E.

LIFE:- 10,000.000 CYCLES.

ELECTRICAL:-

CONFIGURATION:- SPDT-DB.

CURRENT:-

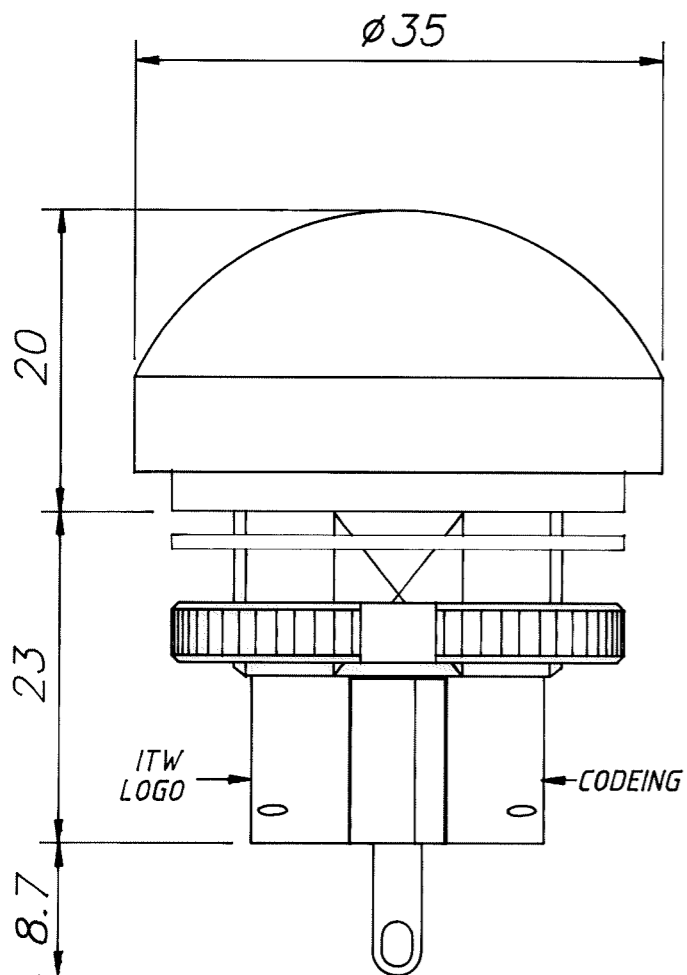
5 AMPS @ 250 V_{a.c.},
 10 AMPS WITH LIFE & MAX,
 TEMP DERATED TO 50,000
 & 70°C.

LIFE:- 100,000 CYCLES

DIELECTRIC STRENGTH:- 1000 V_{rms}

INSULATION RESISTANCE:- 1 G \sim

CONTACT RESISTANCE:- 25 m \sim
 (INITIAL)



X	BUTTON COLOUR
R	RED
G	GREEN
B	BLACK
N	BLUE

ISS.	CHANGE NOTE No.	DATE	APPR.	ISS.	CHANGE NOTE No.	DATE	APPR.
A	ECN 85637	23.11.93	RE				
D	ECN 85657	4-1-94	RE				
E	ECN 86307	30-4-97	JPL				

ITW Switches

Licon Switches, Chicago Switch. RC/UID Switches

© 1992

The Copyright in this drawing and in the article shown belongs to ITW Switches and no reproduction in whole or in part of the drawing or the articles shown may be made without prior written permission.

FINISH (AS ABOVE)
 HEAT TREAT

MATERIAL & SPEC. (SEE BILL OF MATERIAL)

DRAWN	CHKD.	APPR.	SCALE	DATE	TITLE	DRAWING No.	ISS.
RE	MM	SB	2:1	23.11.93	DOMED PUSH BUTTON SWITCH	76-9450/439088X	E