

LOW PROFILE PUSHBUTTON SWITCHES



DISTINCTIVE FEATURES

extra-low profile

low travel

LED RGB illuminated versions

2A @ 36 Vdc

specific wiring & marking upon request

ELECTRICAL SPECIFICATIONS

Max voltage : 36 Vdc

Max current/voltage with resistive load :
2 A @ 36Vdc

Initial contact resistance : 50 mΩ max

Insulation resistance : 120 MΩ mini

Electrical life : 200.000 cycles at full load

Dielectric strength : 2000 VAC, 50Hz, 50 seconds

LED voltage : see *Build your part number* section

LED typical life : 40.000 hours

ENVIRONMENTAL SPECIFICATIONS

Operating temperature = from -30°C to +55°C

Ingress Protection IP67 - frontpanel

Vibrations resistance : 10 to 55Hz, amplitude 1.2mm p-p

MECHANICAL SPECIFICATIONS

Actuation force : 4 Newtons ±1 N

Travel : 0.5mm ±0.1mm

Mechanical life : 1.000.000 cycles minimum

Switchbase material : PA66

Body material : Stainless steel

Button material : Stainless steel

Lugs material : copper tin plating

GENERAL SPECIFICATIONS

Installation diameter : *Build your part number* section

Hand soldering : 260°C max. during 3 seconds



BUILD YOUR PART NUMBER

Family	Diameter	Button	Connection	Material	Led Color	Power Supply
A	19	E	J	S	B	6

DIAMETER / CONTACT TYPE

12	dia. 12mm / form X
16	dia. 16mm / form X
19	dia. 19mm / form X
22	dia. 22mm / form X
25	dia. 25mm / form X
30	dia. 30mm / form X

LED POWER SUPPLY

-	No Illumination
3	3V
6	6V
12	12V
24	24V

BUTTON TYPE

F	Flat Button No Illumination
H	High Button No Illumination
E	Flat Button Illuminated Ring
J	High Button Illuminated Ring
C	Custom design ¹

Illuminated custom design logo - dia. 19mm

MATERIAL

S	Stainless steel (std.)
A	Black anodised aluminum

CONNECTION

J	Solder Terminals
C	Connector ²
F	Wire leads ³

Option C for dia. 19mm

LED COLOR

R	Red	
G	Green	
Y	Yellow	
B	Blue	
W	White	
O	Orange	
RB	Red / Blue	
RG	Red / Green	
RGB	Red / Green/ Blue	

ALFA Led 1 color

ALFA Led 2 or 3 colors

À PROPOS DE CETTE SÉRIE

¹ U.DESIGN service: custom button design upon request, custom marking upon request.

² U.DESIGN service: custom wiring and harness upon request.

³ Only available for diameters 19mm, 22mm and 25mm.

⁴ Typical current: 20mA - Resistor is internal. Other voltages available on request.

Our pushbutton switches are delivered with their nickel plated brass hex nuts as well as their gasket.

⚠ SOME CONFIGURATIONS MIGHT NOT BE AVAILABLE OR SUBMITTED TO M.O.Q.

FOR ALL YOUR CUSTOM REQUESTS, CONTACT US !
sales@kynoppe.com

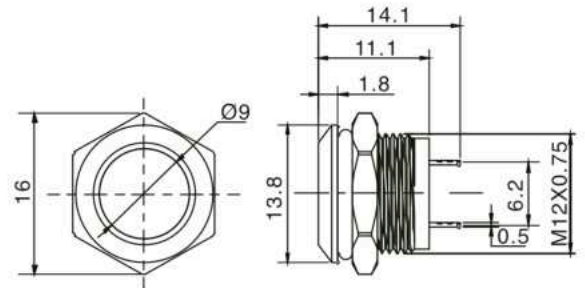
CONFIGURATION EXAMPLES

DIA.12MM - FLAT BUTTON - NON ILLUMINATED



A12FJS

stainless steel, momentary, solder terminals

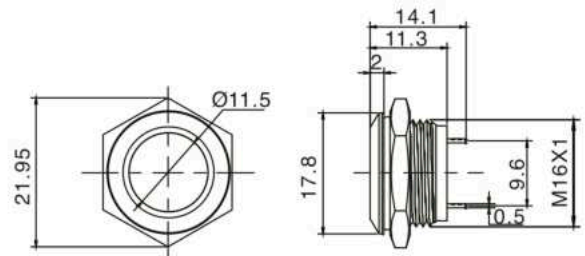


DIA.16MM - FLAT BUTTON - NON ILLUMINATED



A16FJS

stainless steel, momentary, solder terminals

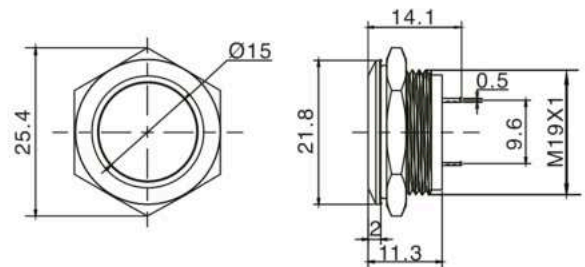


DIA.19MM - FLAT BUTTON - NON ILLUMINATED



A19FJS

stainless steel, momentary, solder terminals

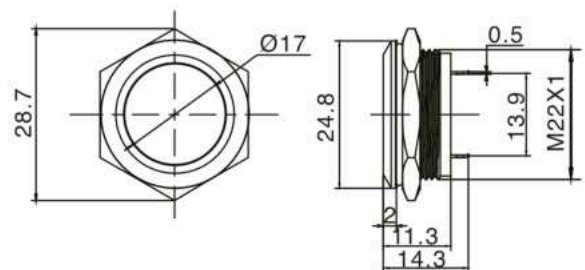


DIA.22MM - FLAT BUTTON - NON ILLUMINATED



A22FJS

stainless steel, momentary, solder terminals

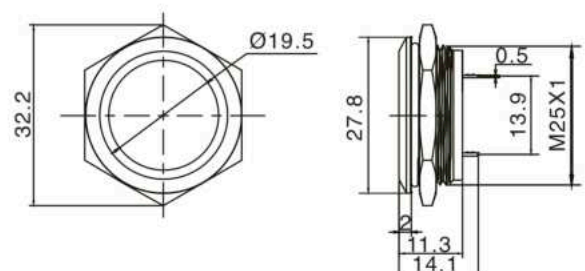


DIA.25MM - FLAT BUTTON - NON ILLUMINATED



A25FJS

stainless steel, momentary, solder terminals



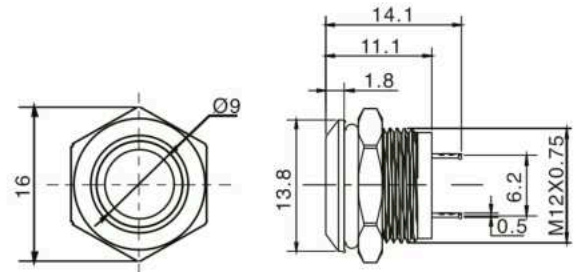
DIA.12MM - FLAT BUTTON - ILLUMINATED



A12EJS••

stainless steel, momentary, solder terminals

• please choose LED color and voltage in Build your part number section,



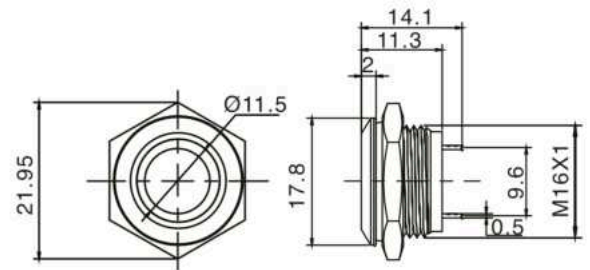
DIA.16MM - FLAT BUTTON - ILLUMINATED



A16EJS••

stainless steel, momentary, solder terminals

• please choose LED color and voltage in Build your part number section,



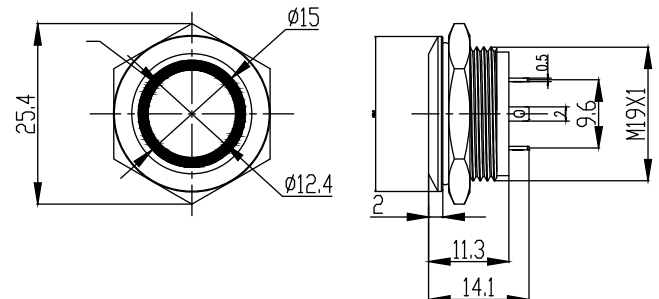
DIA.19MM - FLAT BUTTON - ILLUMINATED



A19EJS••

stainless steel, momentary, solder terminals

• please choose LED color and voltage in Build your part number section,



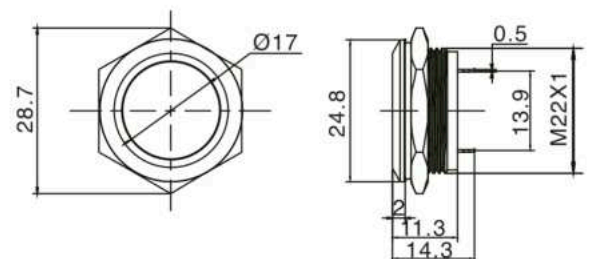
DIA.22MM - FLAT BUTTON - ILLUMINATED



A22EJS••

stainless steel, momentary, solder terminals

• please choose LED color and voltage in Build your part number section,



DIA.30MM - HIGH ROUND BUTTON - ILLUMINATED



A30JJS••

stainless steel, momentary, solder terminals

• please choose LED color and voltage in Build your part number section,

