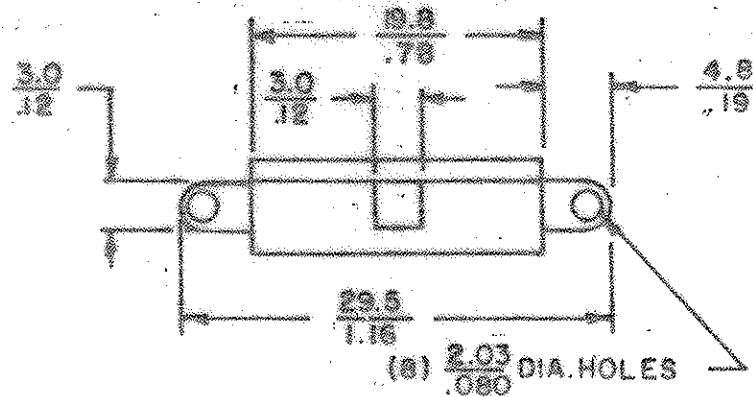


# CHARACTERISTICS

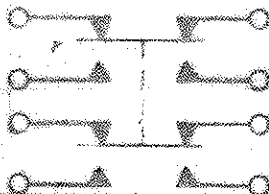
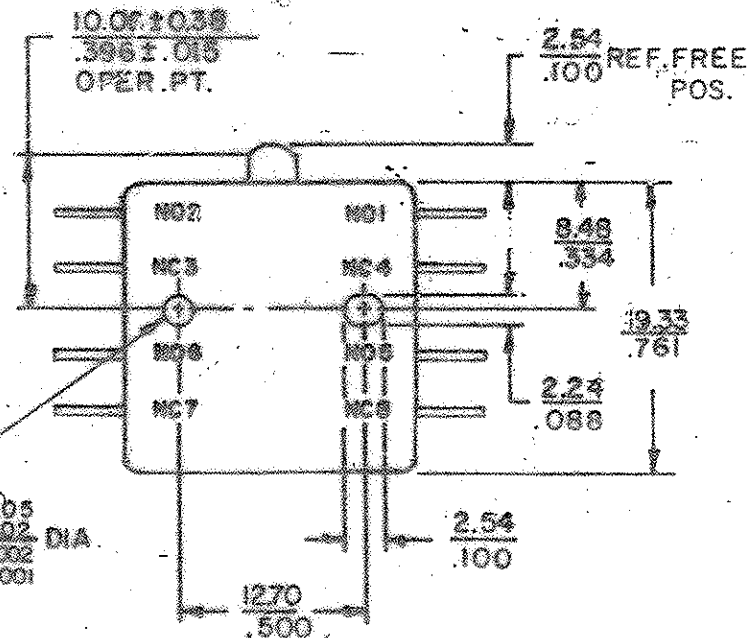
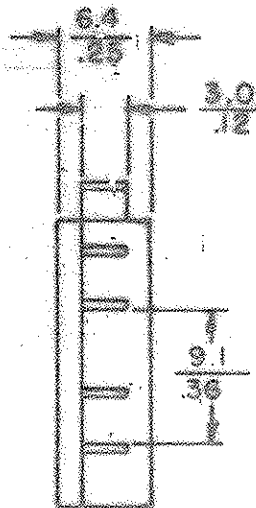
CONTACT ARRANGEMENT	DPDT-DB
PRETRAVEL	$\frac{1.27}{.050}$ MAX.
OVERTRAVEL	$\frac{0.30}{.012}$ MIN.
OPERATING FORCE	$\frac{3.40 \pm .175}{12 \pm .4}$ GRAMS OZ.
RELEASE FORCE	$\frac{142 \text{ GRAMS}}{5 \text{ OZ.}}$ MIN.
MOVEMENT DIFFERENTIAL	$\frac{0.91 \pm .078}{.020 \pm .005}$

MILLIMETERS  
INCHES

DRAWING NO.  
26-804



ELECTRICAL RATING \* U.L. LISTED, 75% P.F.  
 FORM XX OR YY \* 2 AMP. 125/250 VAC.  
 7.5 AMP. 28 VDC. IND.  
 FORM ZZ \* 2 AMP. 125/250 VAC.  
 5 AMP. 28 VDC. IND.  
 ALL POLES SHALL TRANSFER WITHIN  
 $\frac{0.10}{.004}$  OF PLUNGER TRAVEL.



SCHMATIC

CODE IDENT NO 04426

M	REVISED PER CH # 18225	3-29-80	JR									
L	REV. PER CH # 18423	8-15-80	JR									
LET	REVISION	DATE	APPR	DRAWN	CHNL	APPR	DATE	PART NAME	DRAWING NO.	REV.		
		7-8-80	FD	JR	337	349	8-15-80	T-26 END SOLDER TERMINAL	26-804	M		