

SECURITY PUSHBUTTON SWITCHES • Ø40MM • UP TO 4NO4NC • LED ILLUMINATED

DISTINCTIVE FEATURES

large actuation surface
excellent tactile feedback
illuminated ring
momentary or latched
up to 4NO/4NC form B
3A @ 220 V
specific wiring upon request
specific marking upon request



ELECTRICAL SPECIFICATIONS

Max voltage : 250 V
Max current/voltage with resistive load :
3 A @ 220Vac / 5A @ 24 Vdc
Initial contact resistance : 50 mΩ max
Insulation resistance : 1000 MΩ mini at 500Vdc
Electrical life : 100.000 cycles at full load
Dielectric strength : 1500 VAC, 50Hz, 50 seconds
LED voltage : 6, 12, 24 ou 48V
LED typical life : 40.000 hours

ENVIRONMENTAL SPECIFICATIONS

Operating temperature = from -30°C to +85°C
Protection grade to IP67 - frontpanel
Shock resistance : IK10
Compliant with IEC60947-5-1 standard
Compliant with GB14048.5 standard

MECHANICAL SPECIFICATIONS

Actuation force : from 2 to 5 Newtons
Travel : from 1.5mm to 2.5mm

Mechanical life : 500.000 cycles
Switchbase material : PA66
Body material : stainless steel 304
Button material : stainless steel 316
Lugs material : gold plated copper
Contact material : gold plated silver

GENERAL SPECIFICATIONS

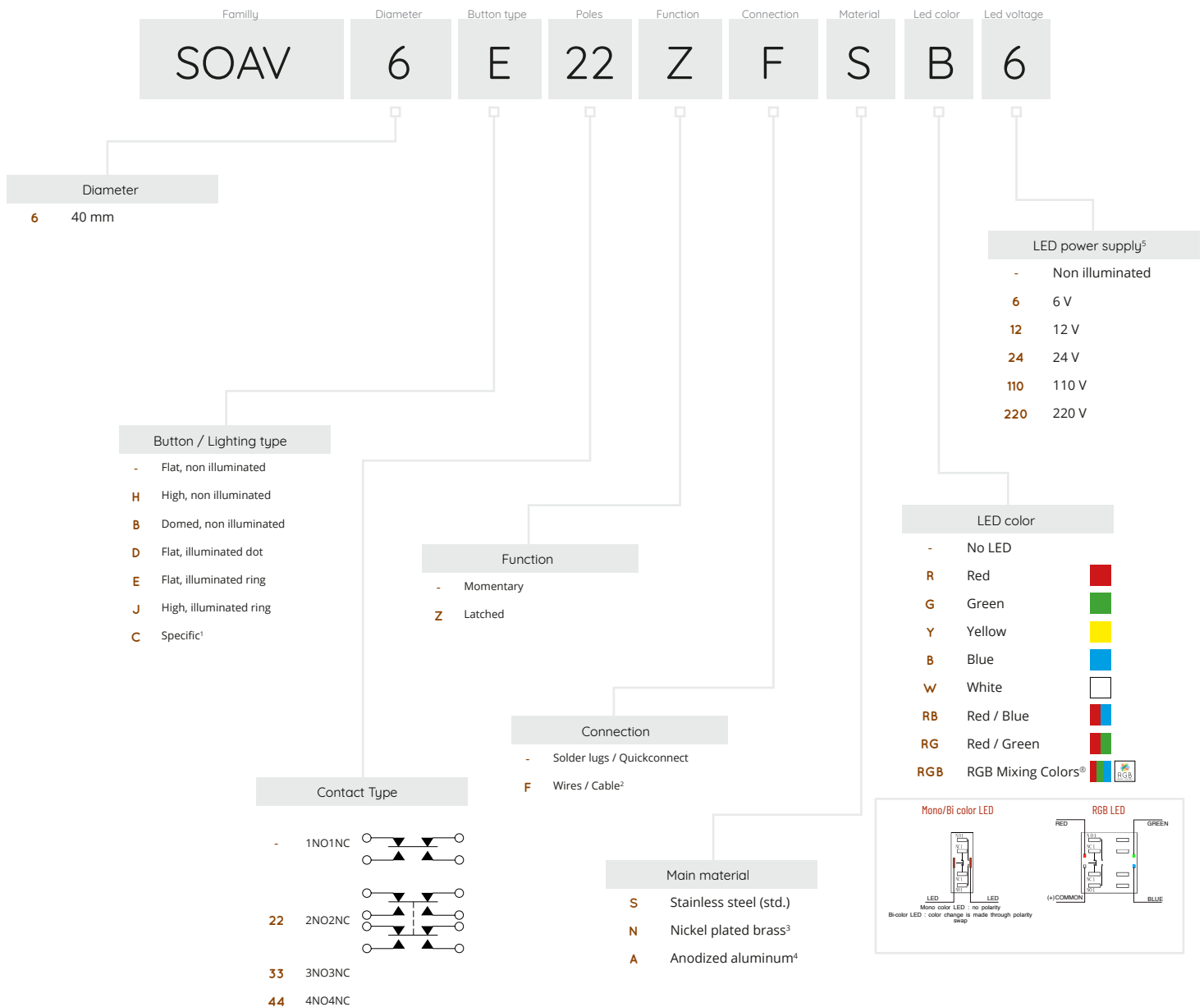
Typical drilling diameter : 40.5mm
Panel thickness : 12mm max.
Minimum pitch for matrix installation : 44 x 44 mm
Hand soldering : 300°C max. during 5 seconds



SOAV6 series


SECURITY PUSHBUTTON SWITCHES • Ø40MM • UP TO 4NO4NC • LED ILLUMINATED

BUILD YOUR PART NUMBER



ABOUT THIS RANGE

¹  U.DESIGN service: custom button design upon request, custom marking, **custom illuminated logo** available on request.

²  U.DESIGN service: custom wiring and harness upon request.

³ Nickel plated brass upon request and subject to MOQ.

⁴ Anodized aluminum with custom color upon request and subject to MOQ.

⁵ Built-in protection resistor. Other LED voltages possible upon request. **High brightness LED available on request**

Our pushbutton switches are delivered with their nickel plated brass hex nuts as well as their gasket.

⚠ SOME CONFIGURATIONS MIGHT NOT BE AVAILABLE OR SUBMITTED TO M.O.Q.

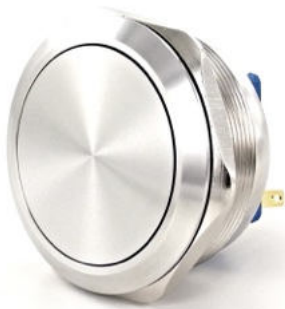
FOR ALL YOUR CUSTOM REQUESTS, CONTACT US !
sales@hynoppe.com

SOAV6 series

SECURITY PUSHBUTTON SWITCHES • Ø40MM • UP TO 4NO/4NC • LED ILLUMINATED

CONFIGURATION EXAMPLES

FLAT BUTTON - NON ILLUMINATED - 1NO/1NC

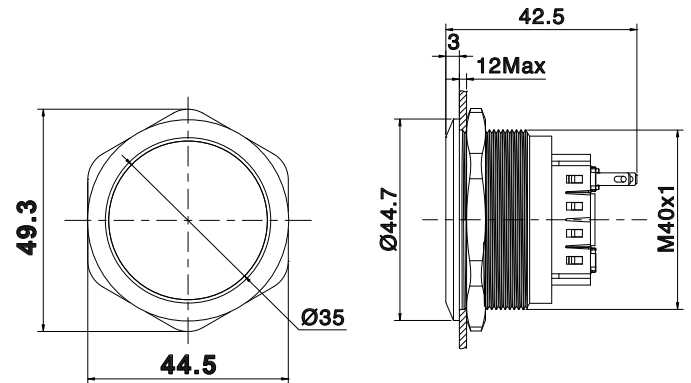


SOAV6S

momentary

SOAV6ZS

latched



DOMED BUTTON - NON ILLUMINATED - 1NO/1NC

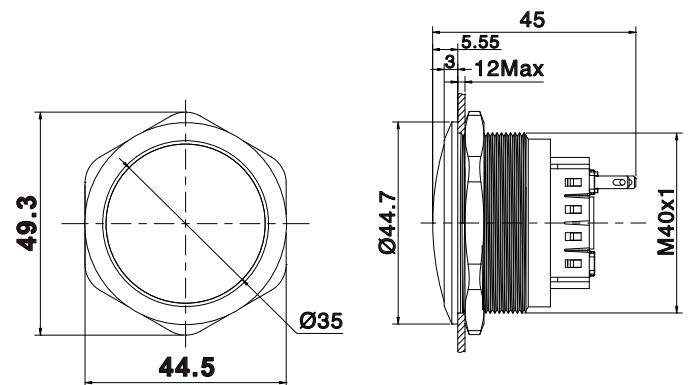


SOAV6BS

momentary

SOAV6BZS

latched



HIGH BUTTON - NON ILLUMINATED - 1NO/1NC

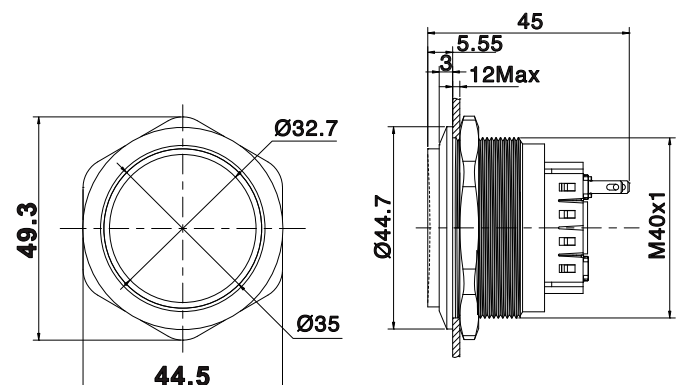


SOAV6HS

momentary

SOAV6HZS

latched



SOAV6 series

SECURITY PUSHBUTTON SWITCHES • Ø40MM • UP TO 4NO/4NC • LED ILLUMINATED

FLAT BUTTON - ILLUMINATED DOT - 1NO/1NC



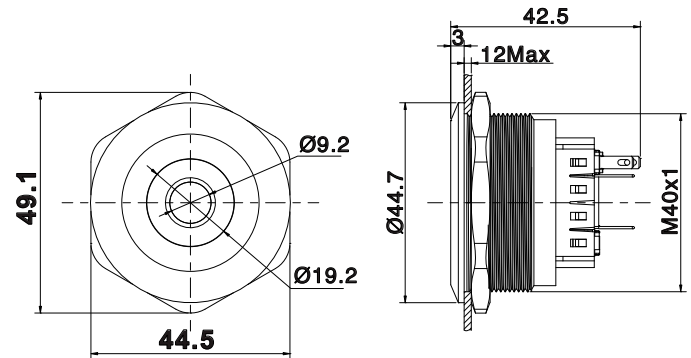
SOAV6DS••

momentary

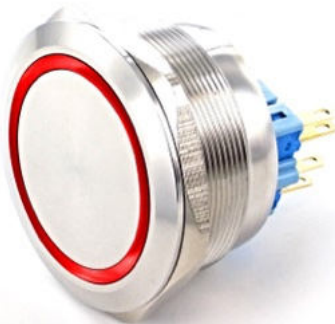
SOAV6DZS••

latched

* please choose LED color and voltage in Build your part number section, when LED is off, central dot is without color



FLAT BUTTON - ILLUMINATED RING - 1NO/1NC



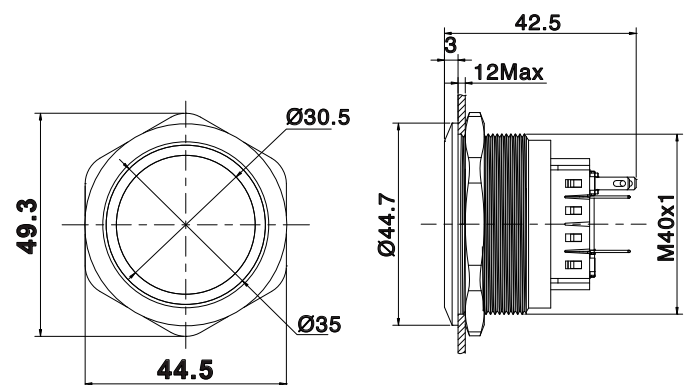
SOAV6ES••

momentary

SOAV6EZS••

latched

* please choose LED color and voltage in Build your part number section, when LED is off, ring is without color



HIGH BUTTON - ILLUMINATED RING - 1NO/1NC



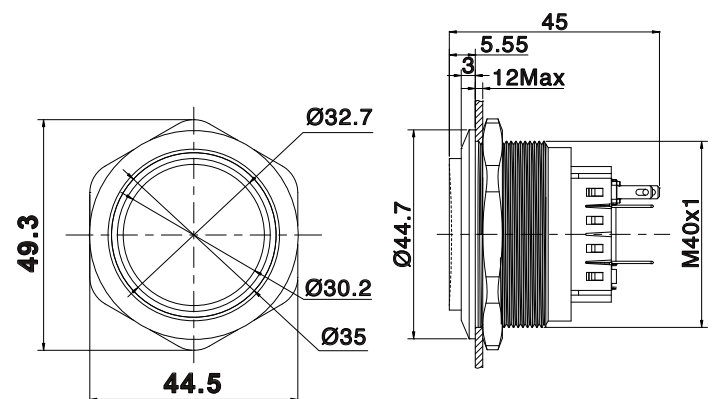
SOAV6JS••

momentary

SOAV6JZS••

latched

* please choose LED color and voltage in Build your part number section, when LED is off, ring is without color



SOAV6 series

SECURITY PUSHBUTTON SWITCHES • Ø40MM • UP TO 4NO/4NC • LED ILLUMINATED

FLAT BUTTON - RGB ILLUMINATED RING - 2NO/2NC



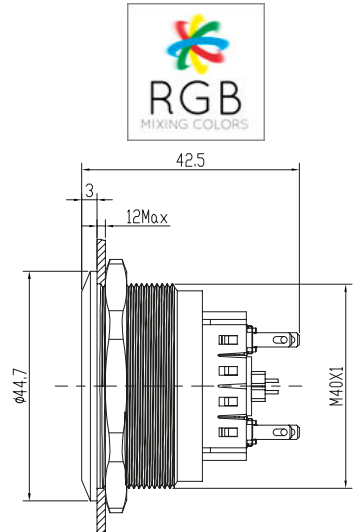
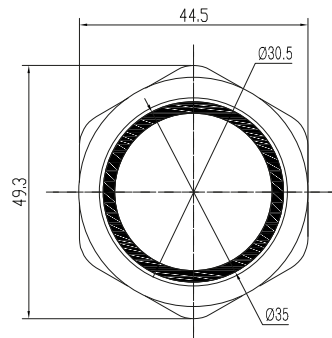
SOAV6E22SRGB•

momentary

SOAV6E22ZSRGB•

latched

*choose voltage in Build your part number section,
D is off, central dot is without color*



FLAT BUTTON - ILLUMINATED RING - 1NO/1NC

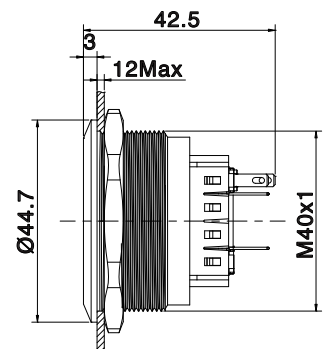
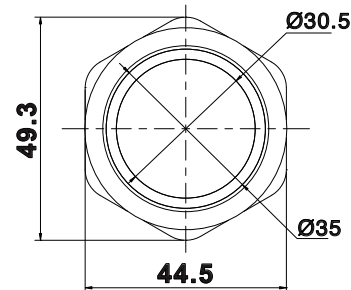


SOAV6EA••-X01

Momentary,

dark grey anodized aluminum

** please choose voltage in Build your part number section,
when LED is off, central dot is without color*



U.DESIGN

cablage haute couture



Custom designed wiring
MOQ required

Illuminated customized logo
MOQ required
no technical fees

