

SECURITY PUSHBUTTON SWITCHES • Ø25MM & Ø30MM • UP TO 2NO2NC • LED ILLUMINATED

🏆 DISTINCTIVE FEATURES

large actuation surface
excellent tactile feedback
illuminated ring
momentary or latched
up to 2NO/2NC form B
3A @ 220 V
specific wiring upon request
specific marking upon request



⚡ ELECTRICAL SPECIFICATIONS

Max voltage : 250 V
Max current/voltage with resistive load :
3 A @ 220Vac / 5A @ 24 Vdc
Initial contact resistance : 50 mΩ max
Insulation resistance : 1000 MΩ mini at 500Vdc
Electrical life : 100.000 cycles at full load
Dielectric strength : 1500 VAC, 50Hz, 50 seconds
LED voltage : see Build you part number section
LED typical life : 40.000 hours

⚙️ ENVIRONMENTAL SPECIFICATIONS

Operating temperature = from -30°C to +85°C
Protection grade to IP67 - frontpanel
Shock resistance : IK10
Compliant with IEC60947-5-1 standard
Compliant with GB14048.5 standard

⚙️ MECHANICAL SPECIFICATIONS

Actuation force : from 2 to 5 Newtons
Travel : from 1.5mm to 2.5mm
Mechanical life : 500.000 cycles
Switchbase material : PA66
Body material : see Build you part number section
Button material : see Build you part number section
Lugs material : gold plated copper
Contact material : gold plated silver

≡ GENERAL SPECIFICATIONS

Typical drilling diameter : 25.5mm / 30.5mm
Panel thickness : 12mm max.
Minimum pitch for matrix installation : 30 x 30 mm
Hand soldering : 300°C max. during 5 seconds



SOAV5 series

SECURITY PUSHBUTTON SWITCHES • Ø25MM & Ø30MM • UP TO 2NO2NC • LED ILLUMINATED

BUILD YOUR PART NUMBER

Family: SOAV

Diameter: 5

Button: E

Poles: 22

Function: Z

Connection: F

Material: S

Led color: B

Led voltage: 6

Diameter

- 5 25 mm
- 5L 30 mm

MONO/BI-COLOR

LED

LED

LED mono-color : led/non polarized
LED bi-color : choose color by swapping polarity

RGB

RED

GREEN

BLUE

(+)COMMON

Button / Lighting type

- Flat, non illuminated
- H High, non illuminated
- B Domed, non illuminated
- D Flat, illuminated dot
- E Flat, illuminated ring
- J High, illuminated ring
- C Specific¹

Function

- Momentary
- Z Latched

Connection

- Solder lugs / Quickconnect
- F Wires / Cable²

Contact Type

- 1NO1NC
- 22 2NO2NC

Main material

- S Stainless steel (std.)
- N Nickel plated brass³
- A Anodized aluminum⁴

LED power supply⁵

- Non illuminated
- 6 6 V
- 12 12 V
- 24 24 V
- 110 110 V
- 220 220 V

LED color

- No LED
- R Red
- G Green
- Y Yellow
- B Blue
- W White
- RB Red / Blue
- RG Red / Green
- RGB RGB Mixing Colors[®]

Mono/Bi color LED

LED

LED

Mono color LED : no polarity
Bi-color LED : color change is made through polarity swap

RGB LED

RED


GREEN

BLUE

(+)COMMON

ABOUT THIS RANGE

¹  U.DESIGN service: custom button design upon request, custom marking, **custom illuminated logo** available on request.

²  U.DESIGN service : custom wiring and harness upon request.

³ Nickel plated brass upon request and subject to MOQ.

⁴ Anodized aluminum with custom color upon request and subject to MOQ.

⁵ Built-in protection resistor. Other LED voltages possible upon request. **High brightness LED available on request**

Our pushbutton switches are delivered with their nickel plated brass hex nuts as well as their gasket.

⚠ SOME CONFIGURATIONS MIGHT NOT BE AVAILABLE OR SUBMITTED TO M.O.Q.

FOR ALL YOUR CUSTOM REQUESTS, CONTACT US !
sales@hynoppe.com

SOAV5 series

SECURITY PUSHBUTTON SWITCHES • Ø25MM & Ø30MM • UP TO 2NO/2NC • LED ILLUMINATED

CONFIGURATION EXAMPLES

Ø25MM - FLAT BUTTON - NO ILLUMINATION - 1NO/1NC

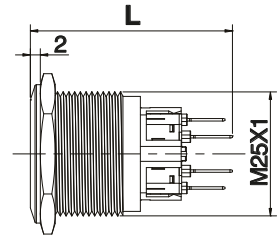
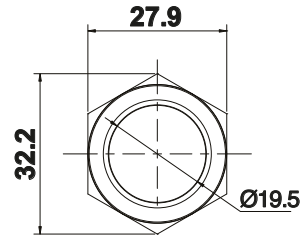


SOAV5S

momentary

SOAV5ZS

maintained



L: J25 Momentary 40.6mm
J25 Maintained 42.25mm

Ø25MM - HIGH ROUND BUTTON - NO ILLUMINATION - 1NO/1NC

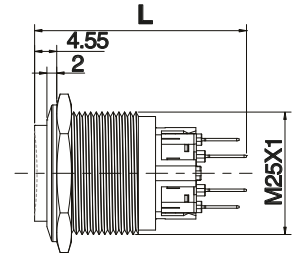
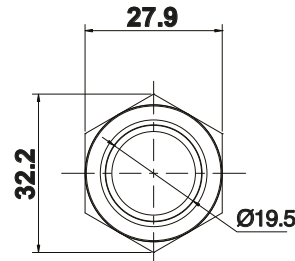


SOAV5HS

momentary

SOAV5HZS

maintained



L: J25 Momentary 43.15mm
J25 Maintained 44.8mm

Ø25MM - FLAT BUTTON - ILLUMINATED DOT - 1NO/1NC

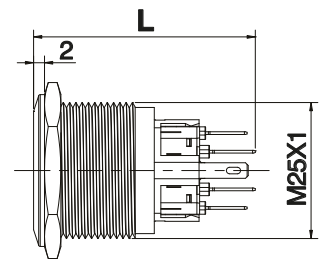
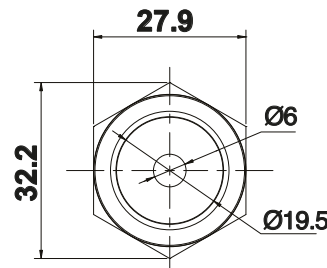


SOAV5DS••

momentary

SOAV5DZS••

maintained



L: Maintained 40.6mm
Maintained 42.25mm

* sélectionner la couleur de la LED ainsi que la résistance dans le CONFIGURATION EXAMPLES

Ø25MM - FLAT BUTTON - RING ILLUMINATED - 1NO/1NC

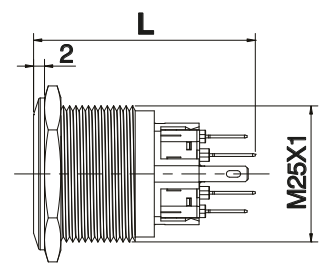
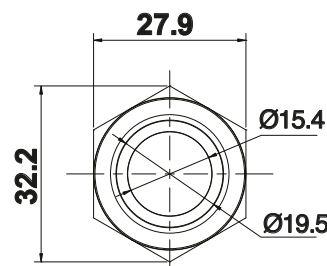


SOAV5ES••

momentary

SOAV5EZS••

maintained



L: Momentary 40.6mm
Maintained 42.25mm

* please choose LED color and voltage in Build your part number section,

SOAV5 series

SECURITY PUSHBUTTON SWITCHES • Ø25MM & Ø30MM • UP TO 2NO/2NC • LED ILLUMINATED

Ø25MM - HIGH ROUND BUTTON - RING ILLUMINATED - 1NO/1NC



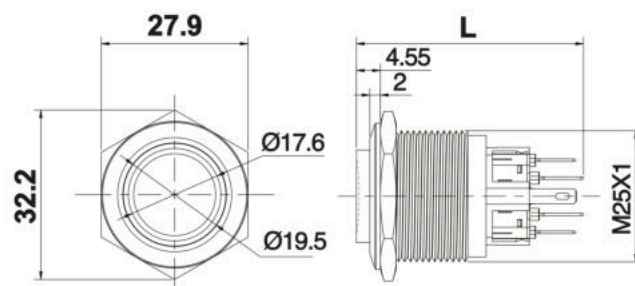
SOAV5JS••

momentary

SOAV5JZS••

maintained

* please choose LED color and voltage in Build your part number section,



L: Momentary 43.15mm
Maintained 44.8mm

Ø30MM - FLAT BUTTON - NO ILLUMINATION - 1NO/1NC

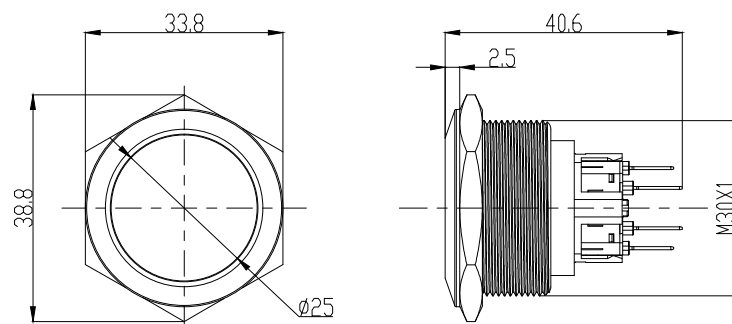


SOAV5LS

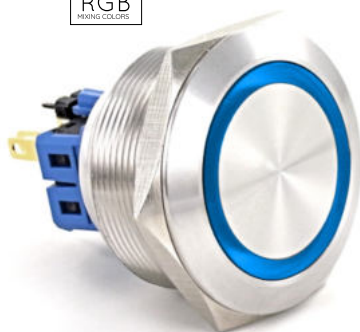
momentary

SOAV5LZS

maintained



Ø30MM - FLAT BUTTON - RING ILLUMINATED - 1NO/1NC



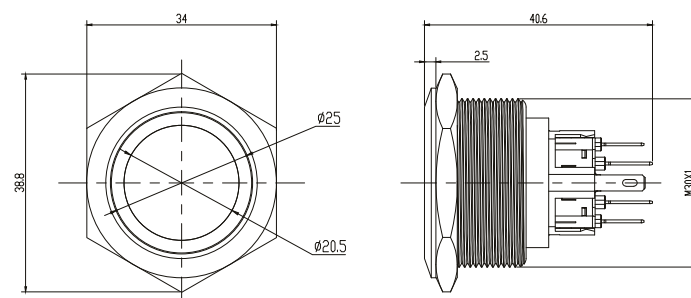
SOAV5LES••

momentary

SOAV5LEZS••

maintained

* please choose LED color and voltage in Build your part number section,



Ø30MM - FLAT BUTTON - ILLUMINATED DOT - 1NO/1NC



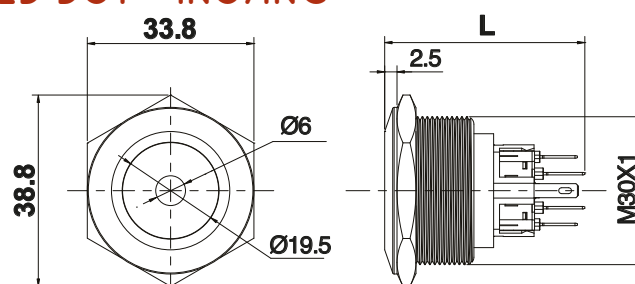
SOAV5LDS••

momentary

SOAV5LDZS••

maintained

* please choose LED color and voltage in Build your part number section,



L: Momentary 40.6mm
Maintained 42.25mm

SOAV5 series

SECURITY PUSHBUTTON SWITCHES • Ø25MM & Ø30MM • UP TO 2NO2NC • LED ILLUMINATED

Ø30MM - HIGH ROUND BUTTON - RING ILLUMINATED - 1NO/1NC



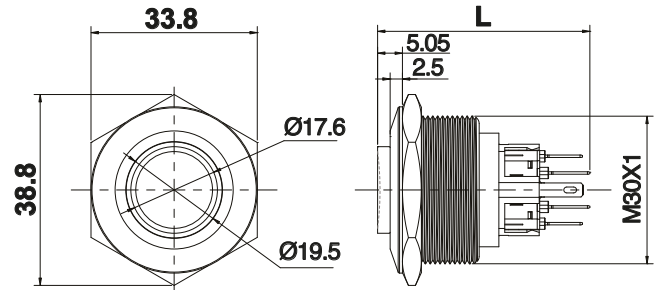
SOAV5LJS••

momentary

SOAV5LJZS••

maintained

* please choose LED color and voltage in Build your part number section,



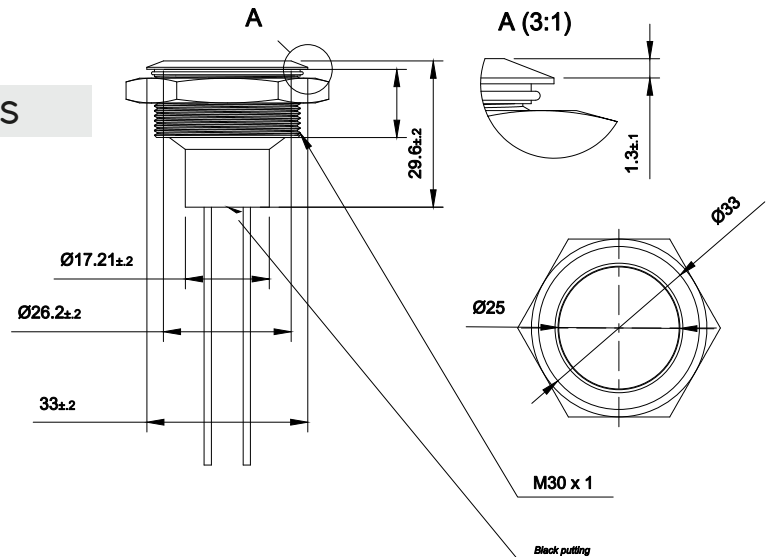
**L: Momentary 43.15mm
Maintained 44.8mm**

Ø30MM - FLAT BUTTON - TOTALEMENT ÉTANCHE - 1NO



SOAV5LFS

momentary



ACCESSORIES

QUICK CONNECTOR



SOAC5-6P-15

equipped with 6 wires of 15 cm dedicated to SOAV4 1 Pole Lit

SOAC5-C

non equipped plastic body

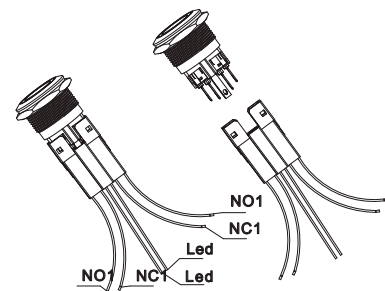
SOAC5-4P-15

equipped with 4 wires of 15 cm dedicated to SOAV4 1 Pole non lit

SOAC3-M

2.8 type female lugs for SOAC4-C

connector is not compatible with the RGB lit version of the pushbutton



U.DESIGN

cablage haute couture



Custom designed wiring
MOQ required

Illuminated customized logo
MOQ required
no technical fees

