

SECURITY PUSHBUTTON SWITCHES • Ø22MM • UP TO 2NO2NC • LED ILLUMINATED

DISTINCTIVE FEATURES

large actuation surface

excellent tactile feedback

superbright LED

momentary or latched

up to 2NO/2NC DPDT

3A @ 220 V

specific wiring upon request

specific marking upon request



ELECTRICAL SPECIFICATIONS

Max voltage : 250 V

Max current/voltage with resistive load :
3 A @ 220Vac / 5A @ 24 Vdc

Initial contact resistance : 50 mΩ max

Insulation resistance : 1000 MΩ mini at 500Vdc

Electrical life : 100.000 cycles at full load

Dielectric strength : 1500 VAC, 50Hz, 50 seconds

LED voltage : see Build you part number section

LED typical life : 40.000 hours

ENVIRONMENTAL SPECIFICATIONS

Operating temperature = from -30°C to +85°C

Protection grade to IP67 - frontpanel

Shock resistance : IK10

Compliant with IEC60947-5-1 standard

Compliant with GB14048.5 standard

MECHANICAL SPECIFICATIONS

Actuation force : from 2 to 5 Newtons

Travel : from 1.5mm to 2.5mm

Mechanical life : 500.000 cycles

Switchbase material : PA66

Body material : see Build you part number section

Button material : see Build you part number section

Lugs material : gold plated copper

Contact material : gold plated silver

GENERAL SPECIFICATIONS

Typical drilling diameter : 22.5mm

Panel thickness : 12mm max.

Minimum pitch for matrix installation : 27 x 27 mm

Hand soldering : 300°C max. during 5 seconds



SECURITY PUSHBUTTON SWITCHES • Ø22MM • UP TO 2NO2NC • LED ILLUMINATED



SOAV4 series

SECURITY PUSHBUTTON SWITCHES • Ø22MM • UP TO 2NO2NC • LED ILLUMINATED

CONFIGURATION EXAMPLES

FLAT BUTTON - NO ILLUMINATION - 1NO/1NC

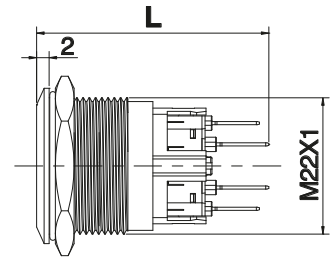
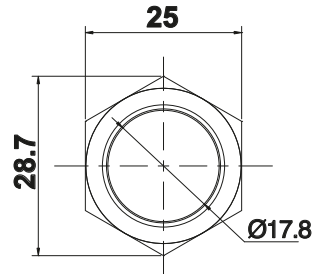


SOAV4S

momentary

SOAV4ZS

maintained



L: Momentary 37.15mm
Maintained 42.5mm

FLAT BUTTON - ILLUMINATED DOT - 1NO/1NC

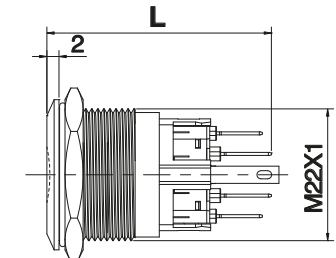
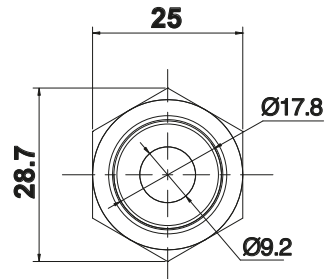


SOAV4DS••

momentary

SOAV4DZS••

maintained



L: Momentary 37.15mm
Maintained 42.5mm

* please choose LED color and voltage in Build your part number section,

FLAT BUTTON - ILLUMINATED RING - 1NO/1NC

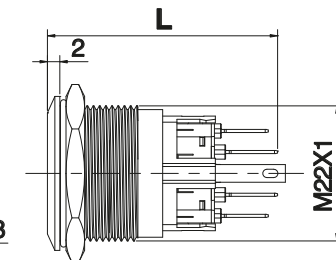
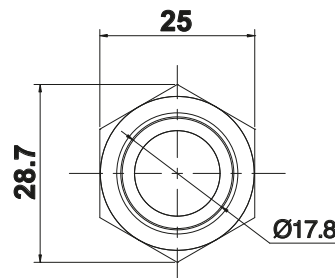


SOAV4ES••

momentary

SOAV4EZS••

maintained



L: Momentary 37.15mm
Maintained 42.5mm

* please choose LED color and voltage in Build your part number section,

HIGH ROUND BUTTON - ILLUMINATED RING - 1NO/1NC

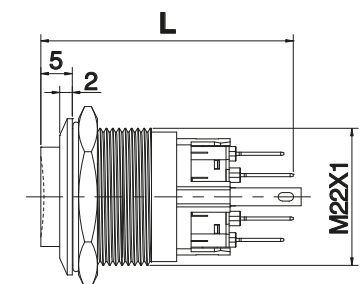
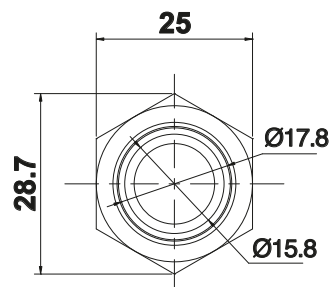


SOAV4JS••

momentary

SOAV4JZS••

maintained



L: Momentary 40.15mm
Maintained 45.5mm

* please choose LED color and voltage in Build your part number section,

SOAV4 series

SECURITY PUSHBUTTON SWITCHES • Ø22MM • UP TO 2NO2NC • LED ILLUMINATED

FLAT BUTTON - ILLUMINATED DOT - 2NO/2NC



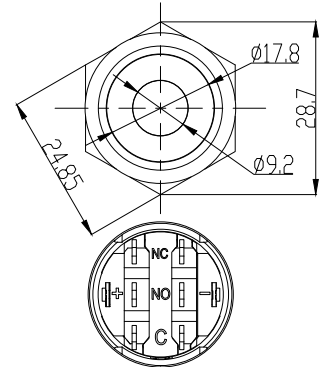
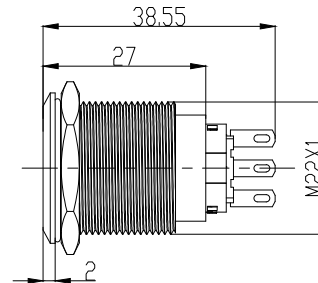
SOAV4D22S••

momentary

SOAV4D22ZS••

maintained

* please choose LED color and voltage in Build your part number section,



ACCESSORIES

QUICK CONNECTOR



SOAC4-6P-15

equipped with 6 wires of 15 cm dedicated to SOAV4 1 Pole Lit

SOAC4-C

non equipped plastic body

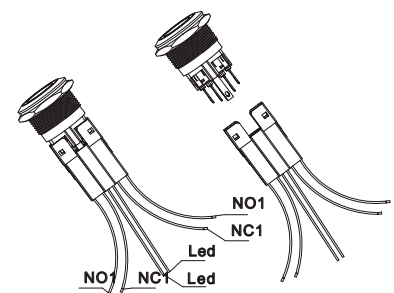
SOAC4-4P-15

equipped with 4 wires of 15 cm dedicated to SOAV4 1 Pole non lit

SOAC3-M

2.8 type female lugs for SOAC4-C

connector is not compatible with the RGB lit version of the pushbutton



U.DESIGN

cablage haute couture



Custom designed wiring
MOQ required

Illuminated customized logo
MOQ required
no technical fees

