

SECURITY PUSHBUTTON SWITCHES • Ø19MM • NO • LED ILLUMINATED

## DISTINCTIVE FEATURES

excellent tactile feedback

LED illuminated versions

momentary

NO contact

3A @ 220 V

specific wiring upon request

custom illuminated logo upon request

IP67/IK10



## ELECTRICAL SPECIFICATIONS

Max voltage : 250 V

Max current/voltage with resistive load :  
3 A @ 220Vac / 5A @ 24 Vdc

Initial contact resistance : 50 mΩ max

Insulation resistance : 1000 MΩ mini at 500Vdc

Electrical life : 100.000 cycles at full load

Dielectric strength : 1000 VAC, 50Hz, 50 seconds

LED voltage : see *Build your part number* section

LED typical life : 40.000 hours

## ENVIRONMENTAL SPECIFICATIONS

Operating temperature = from -30°C to +85°C

Non illuminated versions are IK10 compliant

Ingress Protection to IP67

Compliant with IEC60947-5-1 standard

Compliant with GB14048.5 standard

## MECHANICAL SPECIFICATIONS

Actuation force : from 2 to 5 Newtons

Travel : from 1.5mm to 2.5mm

Mechanical life : 1.000.000 cycles minimum

Switchbase material : PA66G30

Body material : see *Build your part number* section

Button material : see *Build your part number* section

Contact material : silver plated

## GENERAL SPECIFICATIONS

Typical drilling diameter : 19.5mm

Panel thickness : 14mm max.

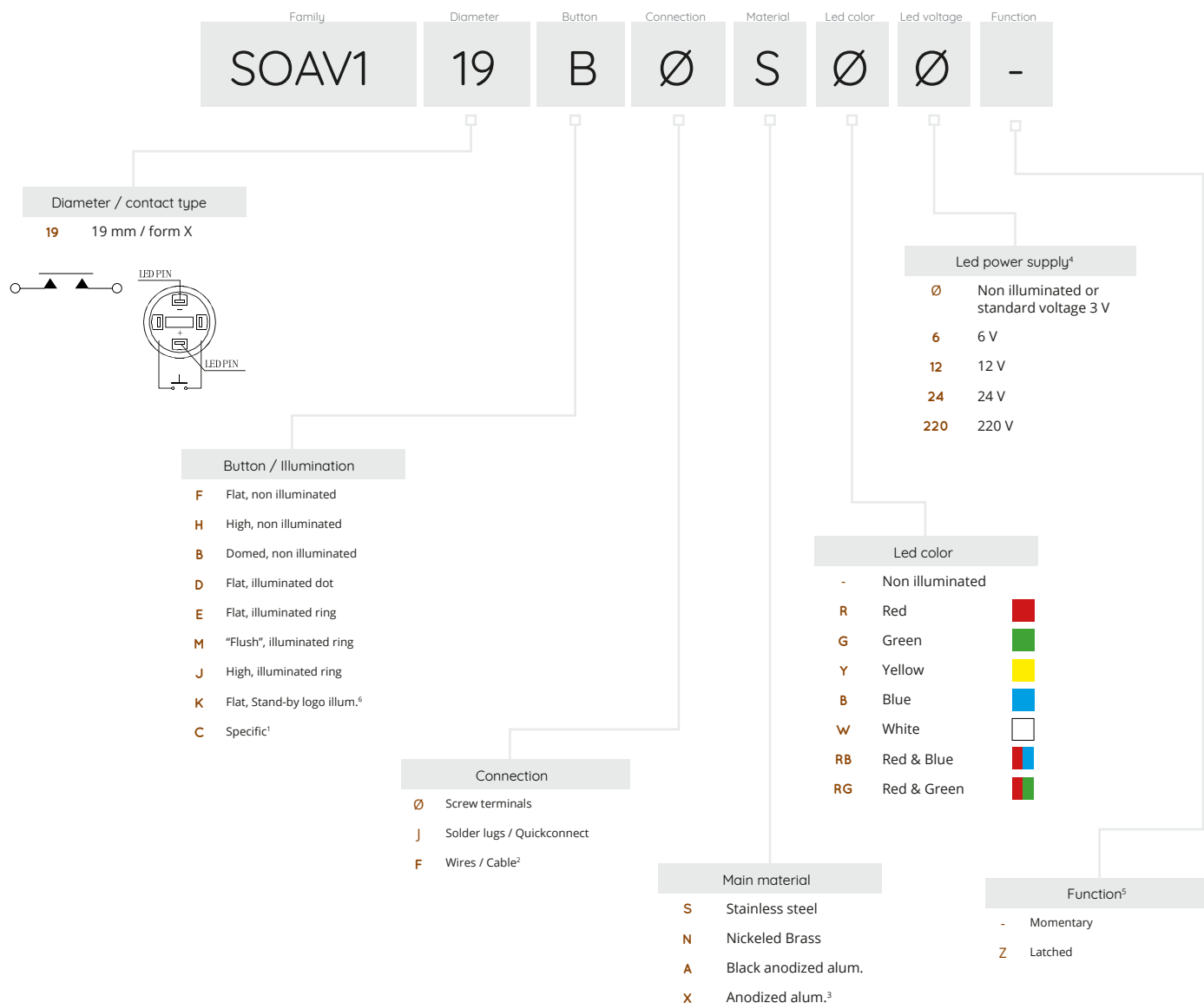
Minimum pitch for matrix installation : 24 x 24 mm

Hand soldering : 300°C max. during 5 seconds

# SOAV119 series

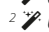
SECURITY PUSHBUTTON SWITCHES • Ø19MM • NO • LED ILLUMINATED

## BUILD YOUR PART NUMBER



## ABOUT THIS SERIES

<sup>1</sup>  U.DESIGN service: custom button design on request, custom marking and custom illuminated logo on request.

<sup>2</sup>  U.DESIGN service : custom wiring and harness on request.

<sup>3</sup> Anodized aluminum with custom color upon request and subject to MOQ.

<sup>4</sup> Standard LED power-supply : 3 V. For the options 6, 12, 24 the resistor is built-in.

<sup>5</sup> Z option is only available on non illuminated versions.

<sup>6</sup> Stand-by illuminated logo only available on screw terminals version.

Our pushbutton switches are delivered with their nickel plated brass hex nuts as well as their gasket.

**⚠ SOME CONFIGURATIONS MIGHT NOT BE AVAILABLE OR SUBMITTED TO M.O.Q.**

**FOR ALL YOUR CUSTOM REQUESTS, CONTACT US !**  
[sales@hynoppe.com](mailto:sales@hynoppe.com)

# SOAV119 series

SECURITY PUSHBUTTON SWITCHES • Ø19MM • NO • LED ILLUMINATED

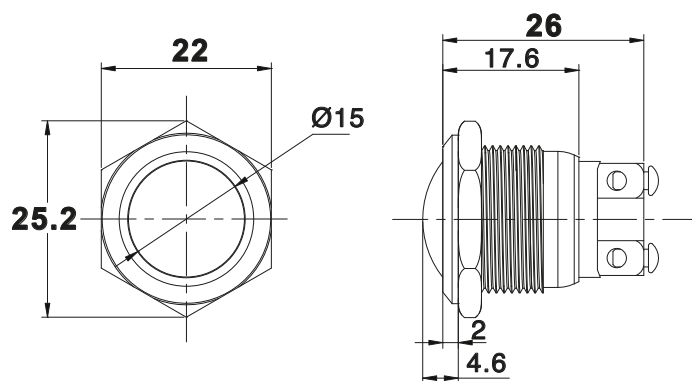
## CONFIGURATION EXAMPLES

### DOMED BUTTON - NON ILLUMINATED - SCREW TERMINALS



**SOAV119B0S00**

stainless steel, momentary

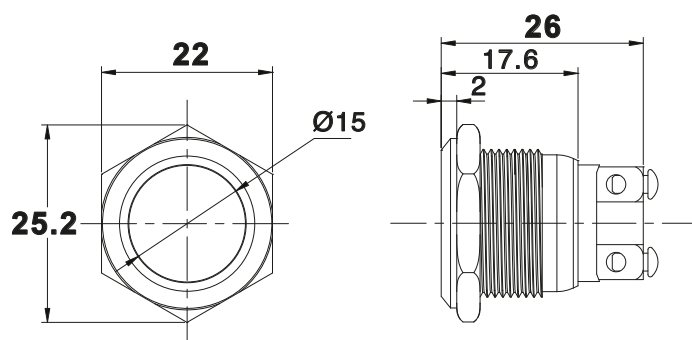


### FLAT BUTTON - NON ILLUMINATED - SCREW TERMINALS



**SOAV119F0S00**

stainless steel, momentary

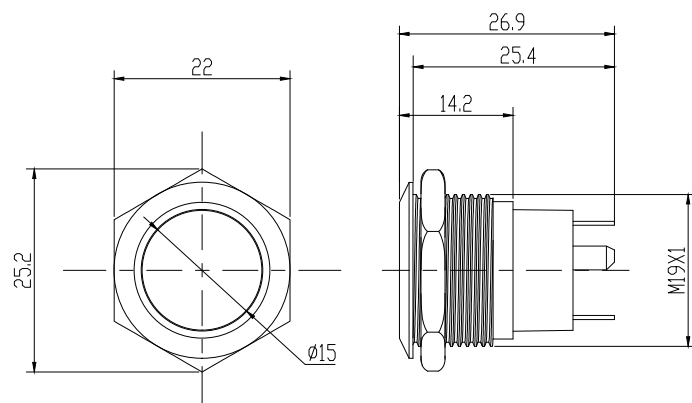


### FLAT BUTTON - NON ILLUMINATED - SOLDER LUGS



**SOAV119FJN00Z**

nickel-plated brass, alternate



# SOAV119 series

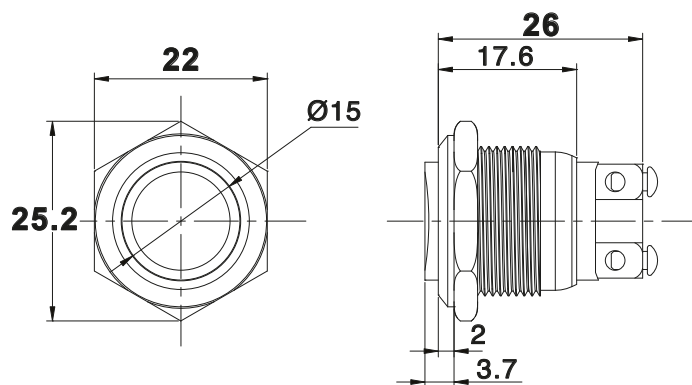
SECURITY PUSHBUTTON SWITCHES • Ø19MM • NO • LED ILLUMINATED

## HIGH BUTTON - NON ILLUMINATED - SCREW TERMINALS



**SOAV119H0S00**

stainless steel, momentary



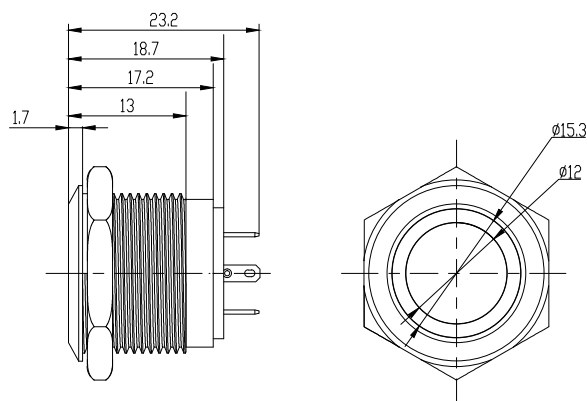
## FLAT BUTTON - ILLUMINATED RING - SOLDER LUGS



**SOAV119EJS00**

stainless steel, momentary

\* please choose LED color and voltage in Build your part number section, page 2  
when LED is off, ring has the same color as the LED



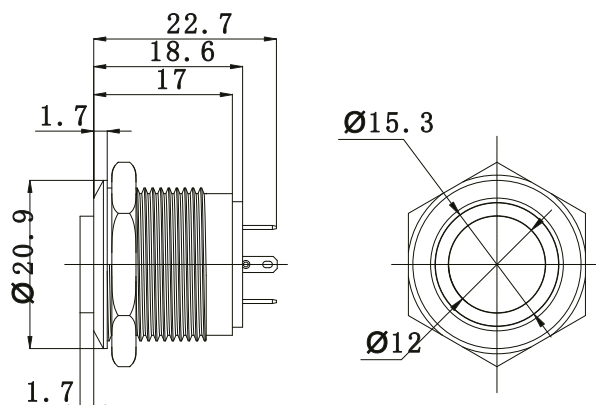
## HIGH BUTTON - ILLUMINATED RING - SOLDER LUGS



**SOAV119JJA00**

black anodised alum., momentary

\* please choose LED color and voltage in Build your part number section, page 2  
when LED is off, ring has the same color as the LED



# SOAV119 series

SECURITY PUSHBUTTON SWITCHES • Ø19MM • NO • LED ILLUMINATED

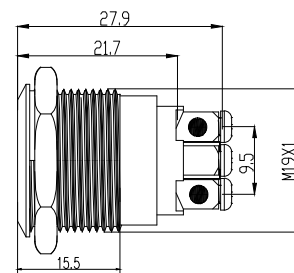
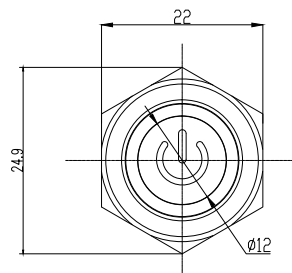
## FLAT BUTTON - ILLUMINATED LOGO - SCREWS



**SOAV119K0S..**

stainless steel., momentary

\* please choose LED color and voltage in Build your part number section, page 2  
when LED is off, ring has the same color as the LED



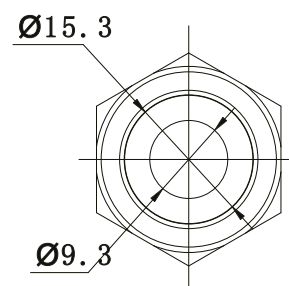
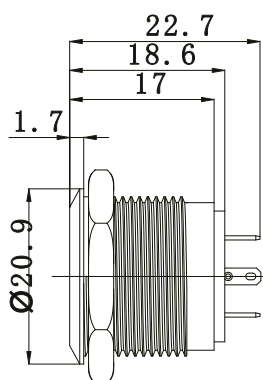
## FLAT BUTTON - ILLUMINATED DOT - SOLDER LUGS



**SOAV119DJS..**

stainless steel, momentary

\* please choose LED color and voltage in Build your part number section, page 2  
when LED is off, ring has the same color as the LED



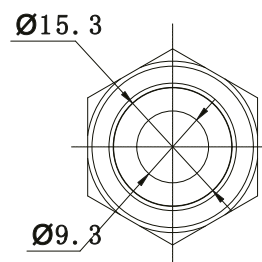
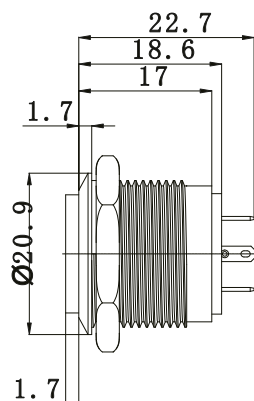
## HIGH BUTTON - ILLUMINATED DOT - SOLDER LUGS



**SOAV119IJS..**

stainless steel, momentary

\* please choose LED color and voltage in Build your part number section, page 2  
when LED is off, ring has the same color as the LED



# SOAV119 series

SECURITY PUSHBUTTON SWITCHES • Ø19MM • NO • LED ILLUMINATED

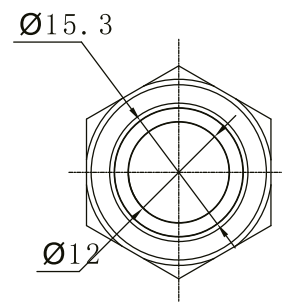
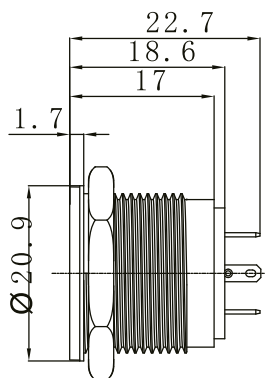
## FLUSH BUTTON - ILLUMINATED RING - SOLDER LUGS



**SOAV119MJS•0R•**

stainless steel, momentary

*\* please choose LED color and external resistor in Build your part number section, page 2 when LED is off, ring is without color*



### ACCESSORIES

**80-000220**

knurled nut  
nickel brass, M19x1



**80-000219**

knurled nut  
brass, M19x1



### Crazy Colors

customized button and body color  
submitted to MOQ



### U.DESIGN

customized wiring  
submitted to MOQ



custom designed  
illuminated logo  
submitted to MOQ

